

# Screwless Double-Level Terminal Blocks

## DN-QD12-A

## DN-QD12X-A

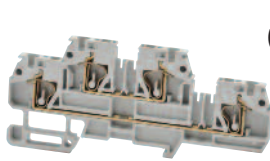
## LED version

## Diode version

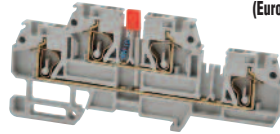
Double-level terminal blocks offer twice the wiring density of feed-through blocks. The DN-QD12X-A version is supplied with an internal jumper to common all four of its connection points.

This style is available with LED indicator installed. The LED illuminates when voltage is present. The DN-QD12L2-A version is for 12 - 24V AC/DC circuits, and includes current limiting elements.

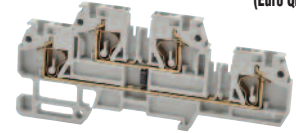
Typically, an inductive load produces a voltage spike when it is turned off. These terminal blocks with built-in clamping diode help protect your PLC's output circuits.



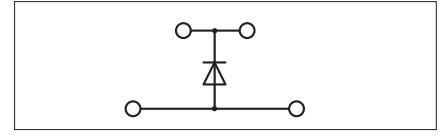
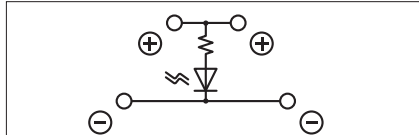
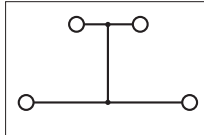
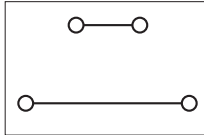
DN-QD12X-A  
(Euro QD2.5/35)



DN-QD12L2-A  
(Euro QD2.5/35)



DN-QD12DR-A  
(Euro QD2.5/35)



### Double - Level Screwless Terminal Blocks

	Part Number	Price	Pcs/Pkg	Part Number	Price	Pcs/Pkg	Part Number	Price	Pcs/Pkg	Part Number	Price	Pcs/Pkg
Gray Terminal Block	DN-QD12-A	<--->	25	DN-QD12X-A	<--->	10	DN-QD12L2-A	<--->	10	DN-QD12DR-A	<--->	10
Blue Terminal Block	DN-QD12B-A	<--->	25	DN-QD12XB-A	<--->	10						
Description	Double - level screwless terminal blocks			Double - level screwless cross- connected terminal blocks			Double - level screwless terminal blocks with LED installed for visual circuit indication			Double - level screwless terminal blocks with diode installed for circuit protection		

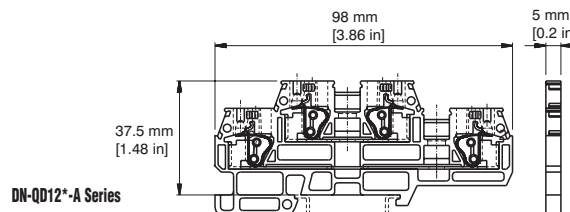
### Specifications

UL Approval	600V	20A	24-12AWG	600V	20A	24-12AWG	600V	20A	24-12AWG	600V	1A diode	24-12AWG
CSA Approval	600V	20A	24-12AWG	600V	20A	24-12AWG	600V	20A	24-12AWG	600V	1A diode	24-12AWG
VDE Approval	500V	24A	2.5mm <sup>2</sup>	500V	24A	2.5mm <sup>2</sup>	500V	24A	2.5mm <sup>2</sup>	500V	1A diode	2.5mm <sup>2</sup>
CE Conformity	LVD 2006/95/EC			LVD 2006/95/EC			LVD 2006/95/EC			LVD 2006/95/EC		
Agency File	UL: E179129			UL: E179129			UL: E179129			UL: E179129		
LED Voltage							12 - 24V AC/DC. 3.4 kΩ					
Wire Strip Length	0.47"(12mm)			0.47"(12mm)			0.47"(12mm)			0.47"(12mm)		
Density	60 pcs./ft. (200/m)			60 pcs./ft. (200/m)			60 pcs./ft. (200/m)			60 pcs./ft. (200/m)		
Operating Temperature	Ambient air temperature: -13°F to 104°F (-25°C to 40°C) Relative humidity: 50% max at 104°F (40°C); 90% max at 68°F (20°C)											
SCCR	10 kA per Table SB4.1, 2009, UL 508A, Maximum short circuit current rating for unmarked components											

### Accessories

Accessory	Part Number	Price	Pcs/Pkg
DIN Rail	DN-R35S1	<--->	10
	DN-R35S1-2	<--->	2
End Bracket	DN-EB35	<--->	50
	DN-EB35MN	<--->	20
	DN-EB35-A or DN-QEB35	various	50
	DN-EB35-A-10 or DN-QEB35-10	various	10
End Cover	DN-QDEC12	<--->	25
Jumper	DN-2J2Y	<--->	100
	DN-3J2Y	<--->	100
	DN-24J2Y	<--->	5
Cutting Tool	DN-J2CUT	<--->	1
Marking Tags	DN-QL Series	<--->	500
Angled Support Bracket	DN-ASB1	<--->	50

## Dimensions



\*Note: Jumpering and testing capability on bottom level only, for DN-QD12X, DN-QD12L2 and DN-QD12DR.

# Screwless Terminal Blocks Overview

## Why go screwless?

Screwless clamping technology offers several benefits:

- **Speed:** On average, screwless connections can be made in half the time of screw type connections, cutting installation labor costs in half.
- **Ease:** No need for twisting and turning screws, so screwless terminal blocks are much easier on the installer's hands and arms. Also, wiring from the top of the terminal blocks allow installers to accurately and reliably see the wire fully inserted into the spring clamp.
- **Safety:** Never have a problem with faulty connections from loose screws again! Meets the same UL, CSA, and IEC standards as screw-type terminal blocks.
- **Maintenance-free:** The screwless spring clamp conforms to the wire with constant tension, making it maintenance-free.

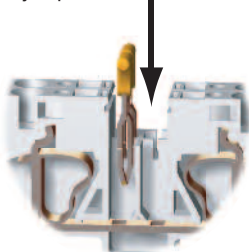
## Are there any trade-offs of going screwless versus screw-type?

Unless you need to clamp multiple wires to the same connection point, the answer is no. If you do, then there may be a slight trade-off in requiring more panel space than with screw terminal blocks. Unlike screw terminal blocks, screwless terminal block spring-clamps are designed to clamp a single wire, only. This is why multiple versions exist like the "one-to-two" or "two-to-two." These versions allow multiple wires to be connected together via multiple spring clamps.

## How do the jumpers work?

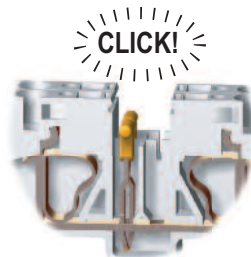
1

Properly align jumper bar with terminal block center jumper slots.

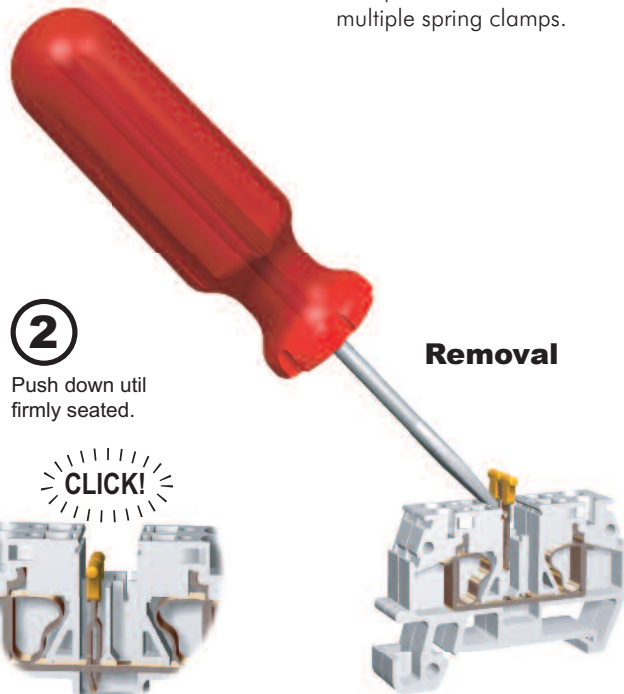


2

Push down until firmly seated.

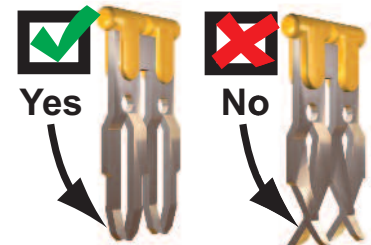
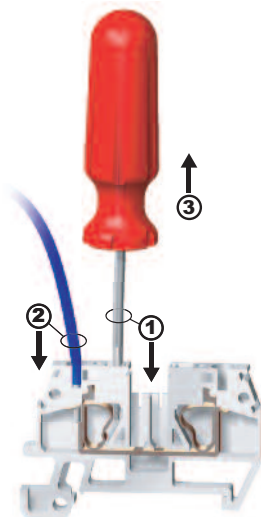


Removal



## How does it work?

Well, it's pretty simple: Push, Insert, Release. Just push your screwdriver into the spring clamp (a rectangular shaped hole) to open the spring clamp; insert the stripped wire into the clamp (a circular shaped hole), and pull out your screwdriver to release the clamp against the wire. That's it. The connection is made.



Yes = Good, acceptable jumper

No = Bad, damaged jumper

# Screwless DINnectors Cross Reference

Allen-Bradley Part Number	Screwless DINnectors Part Number
1492-R4	DN-Q10-A
1492-R4-B	DN-Q10B-A
1492-R3	DN-Q12-A
1492-R3T	DN-Q12-1-2-A
1492-R3Q	DN-Q12-2-2-A
1492-R3-B	DN-Q12B-A
1492-R3T-B	DN-Q12B-1-2-A
1492-R3Q-B	DN-Q12B-2-2-A
1492-R6	DN-Q8-A
1492-R6-B	DN-Q8B-A
1492-RD3	DN-QD12-A
1492-RD3-B	DN-QD12B-A
1492-RD3C	DN-QD12X-A
1492-TC4	DN-QEC10
1492-RG4	DN-QG10
1492-RG3	DN-QG12
1492-RG6	DN-QG8
1492-SM5x9	DN-QL100
1492-SM5x9	DN-QLB
1492-RG3T	DN-QG12-1-2
1492-RG3Q	DN-QG12-2-2
1492-RKD3	DN-QKBD12-A

Phoenix Part Number	Screwless DINnectors Part Number
3031364	DN-Q10-A
3031377	DN-Q10B-A
3031212	DN-Q12-A
3031241	DN-Q12-1-2-A
3031306	DN-Q12-2-2-A
3031225	DN-Q12B-A
3031254	DN-Q12B-1-2-A
3031319	DN-Q12B-2-2-A
3031487	DN-Q8-A
3031490	DN-Q8B-A
3031270	DN-QD12-A
3031283	DN-QD12B-A
3031539	DN-QD12X-A
3030420	DN-QEC10
3031380	DN-QG10
3031238	DN-QG12
3031500	DN-QG8
1050211	DN-QL100
1050004	DN-QLB
3104013	DN-QG12-1-2
3031267	DN-QG12-2-2
3031322	DN-QKBD12-A

Wago Part Number	Screwless DINnectors Part Number
282-901	DN-Q10-A
282-904	DN-Q10B-A
280-901	DN-Q12-A
280-681	DN-Q12-1-2-A
280-833	DN-Q12-2-2-A
280-904	DN-Q12B-A
280-684	DN-Q12B-1-2-A
280-834	DN-Q12B-2-2-A
284-601	DN-Q8-A
284-604	DN-Q8B-A
281-619	DN-QD12-A
281-629	DN-QD12B-A
N/A	DN-QD12X-A
282-325	DN-QEC10
282-907	DN-QG10
281-907	DN-QG12
284-907	DN-QG8
N/A	DN-QL100
209-xxx	DN-QLB
279-687	DN-QG12-1-2
279-837	DN-QG12-2-2
280-870	DN-QKBD12-A

Weidmuller Part Number	Screwless DINnectors Part Number
163205	DN-Q10-A
163206	DN-Q10B-A
160851	DN-Q12-A
160854	DN-Q12-1-2-A
160857	DN-Q12-2-2-A
160852	DN-Q12B-A
160855	DN-Q12B-1-2-A
160858	DN-Q12B-2-2-A
160862	DN-Q8-A
160863	DN-Q8B-A
167430	DN-QD12-A
167863	DN-QD12B-A
168999	DN-QD12X-A
163209	DN-QEC10
163208	DN-QG10
160864	DN-QG12
160867	DN-QG8
161000	DN-QL100
161000	DN-QLB
160865	DN-QG12-1-2
160866	DN-QG12-2-2
160868	DN-QKBD12-A